

Test Weights

NIST Avoirdupois Heavy Capacity Grip Handle Weights

3000lb - 200lb



NIST CLASS F						
Weight	Part #	Dimensions	Slot Width	Slot Depth*	List Price	Traceable Certificate
3000lb	12872	20 3/4in W x 20 3/4in L x 29in H	3 1/2in	2 3/4in	\$8,100.00	\$300.00
2500lb	12854	20 3/4in W x 20 1/4in L x 24 1/4in H	3 1/2in	2 3/4in	7,500.00	225.00
2000lb	12868	20 3/4in W x 20 3/4in L x 19 1/2in H	3 1/2in	2 3/4in	6,400.00	225.00
1500lb	12864	15 1/8in W x 15 1/8in L x 23 7/8in H	2 1/2in	2 1/2in	5,765.00	225.00
1250lb	12858	15in W x 15 1/8in L x 23 7/8in H	2 1/2in	2 1/2in	4,800.00	225.00
1000lb	12850	15in W x 15 1/2in L x 19in H	2 1/2in	2 1/2in	2,375.00	225.00
500lb	12844	11 1/2in W x 11 3/4in L x 16in H	2 1/2in	1 3/4in	1,445.00	225.00
250lb	12892	9 3/4in W x 9 3/4in L x 12in H	2 1/2in	2in	1,320.00	225.00
200lb	12890	9 3/4in W x 9 3/4in L x 10in H	2 1/2in	2in	1,150.00	225.00

NIST Avoirdupois Cast Iron, Grip Handle Test Weights

100lb - 20lb



NIST CLASS F						
Weight	Part #	Dimensions	Slot Width	Slot Depth*	List Price	Traceable Certificate
100lb	12862	9 1/4in W x 7in L x 7 3/4in H	4 1/2in	1 5/8in	\$510.00	\$100.00
50lb	12839	5.5in W x 7.88in L x 6.56in H	4 1/2in	1 5/8in	120.00	75.00
30lb	12878	8 1/4in W x 4 15/16in L x 4 1/2in H	Consult Factory	Consult Factory	115.00	75.00
25lb	12833	4.5in W x 6.5in L x 4.93in H	3 5/8in	1in	105.00	75.00
20lb	12870	5 7/8in W x 4 1/2in L x 5in H	3 5/8in	1 1/8in	85.00	75.00

NIST Avoirdupois Grip Handle Weights

10lb - 1lb



ASTM CLASS 7				
Weight	Part #	Dimensions	List Price	Traceable Certificate
10lb	12828	3.25in W x 5.0in L x 3.96in H	\$70.00	\$75.00
5lb	12823	2.56in W x 4.0in L x 3.2in H	50.00	75.00
2lb	12874	2.12in W x 3.0in L x 1.74in H	48.00	60.00
1lb	12876	1.68in W x 2.5in L x 1.38in H	44.00	60.00

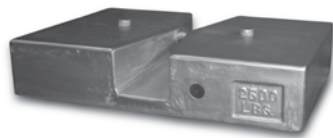
C&M Scale
 7241 W. Roosevelt Rd
 Forest Park IL 60130
 Sales, Service & Rentals

Toll Free: (800) 243-3721
 Phone: (708) 771-0100
 Fax: (708) 771-0196
 www.cmscale.com

Test Weights

NIST Avoirdupois Heavy Nesting Slab Weights

2500 lb - 1000 lb



NIST CLASS F						
Weight	Part #	Dimensions	Slot Width	Slot Depth*	List Price	Traceable Certificate
2500lb	12860	42in W x 30in L x 8 1/4in H	2in	2 1/4in	\$7,500.00	\$225.00
1000lb	34563	29 1/2in W x 19 1/2in L x 7 1/4in H	2in	2 1/4in	3,750.00	225.00

NIST Metric Heavy Capacity Grip Handle Weights

1000 kg - 100 kg



NIST CLASS F						
Weight	Part #	Dimensions	Slot Width	Slot Depth*	List Price	Traceable Certificate
1000kg	12801	20 1/2in W x 20 1/2in L x 22in H	3 1/2in	2 3/4in	\$6,400.00	\$300.00
500kg	12797	15 1/8in W x 15 1/8in L x 20 3/4in H	2 1/2in	2in	2,800.00	225.00
250kg	12782	11 3/4in W x 12 1/2in L x 17 1/2in H	2 1/2in	2in	1,550.00	225.00
200kg	12793	11 1/2in W x 12in L x 14 1/4in H	2 1/2in	1 7/8in	1,330.00	225.00
100kg	12817	9 7/8in W x 9 7/8in L x 11in H	2 1/2in	2in	1,200.00	225.00

ADDITIONAL ACCESSORIES		
Part #	Description	List Price
36092	Certificate of Accuracy	\$45.00

NIST Metric Grip Handle Weights

50 kg - 500 g



NIST CLASS F						
Weight	Part #	Dimensions	Slot Width	Slot Depth*	List Price	Traceable Certificate
50kg	12803	9 1/4in W x 7in L x 8 3/8in H	4 1/2in	1 5/8in	\$525.00	\$125.00
35kg	12805	7 7/8in W x 5 9/16in L x 9 1/8in H	4 1/4in	3 5/8in	350.00	125.00
25kg	12775	5.5in W x 7.88in L x 7.09in H	4 1/2in	1 3/4in	145.00	70.00
20kg	12771	5.5in W x 8.0in L x 5.9in H	4 1/2in	1 1/2in	110.00	70.00
10kg	12767	4.5in W x 6.12in L x 5.0in H	3 5/8in	1in	85.00	70.00

ASTM CLASS 7						
Weight	Part #	Dimensions	Slot Width	Slot Dept*	List Price	Traceable Certificate
5kg	12786	3.15in W x 5.45in L x 4.10in H	-	-	\$70.00	\$70.00
2kg	12809	4 1/16in W x 2 5/8in L x 2 11/16in H	-	-	50.00	70.00
1kg	12813	3 1/16in W x 2 1/8in L x 1 3/4in H	-	-	48.00	70.00
500g	12815	2 9/16in W x 1 5/8in L x 1 7/16in H	-	-	44.00	70.00

C&M Scale
 7241 W. Roosevelt Rd
 Forest Park IL 60130
 Sales, Service & Rentals

Toll Free: (800) 243-3721
 Phone: (708) 771-0100
 Fax: (708) 771-0196
 www.cmscale.com