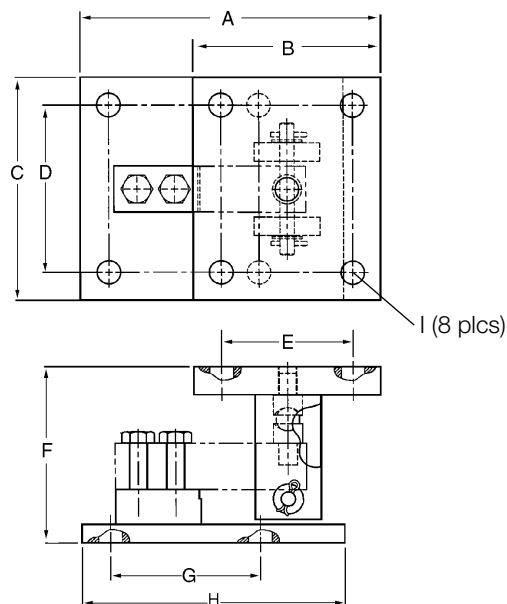


### STANDARD FEATURES

- Capacities (per module): 250-5,000lb SE mild steel, 1,000-4,000lb Stainless steel
- Zinc Plated mild steel construction or stainless steel
- Ball and cup load introduction
- Self-checking, multi-directional movement
- Design incorporates a ball and cup for self centering
- The RLBTM will accommodate a standard shear beam 500-5,000lb SE load cell with a threaded load hole

### SPECIFICATIONS

DIMENSIONS										
RATED CAPACITY	A	B	C	D	E	F	G	H	I	
lb/inches										
500-5000 SE	8.00	5.00	6.00	4.50	3.50	4.75	4.00	7.00	.63	
kg/mm										
113.4/2268.0	203.2	127	152.4	114.3	88.9	120.6	101.6	177.8	16.0	



**LOAD RATING  
(LOAD CELL CAPACITY)**

**PART #**

**Mild steel**

**Single Module (Does NOT Include Load Cell)**

500-5000 lb SE (113.4-2268.0 kg) ..... 53059.....

**Stainless steel**

**Single Module (Does NOT Include Load Cell)**

1000-4000 lb (113.4-2268.0 kg)..... 53066.....

SE refers to small envelope

**C&M Scale**  
7241 W. Roosevelt Rd  
Forest Park IL 60130  
**Sales, Service & Rentals**

**Toll Free: (800) 243-3721**  
**Phone: (708) 771-0100**  
**Fax: (708) 771-0196**  
**[www.cmscale.com](http://www.cmscale.com)**