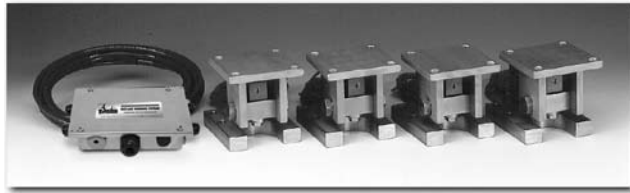


# RL1800 Series



Available in configuration with three or four mounting assemblies.

## LOAD CELL CERTIFICATIONS



## STANDARD FEATURES

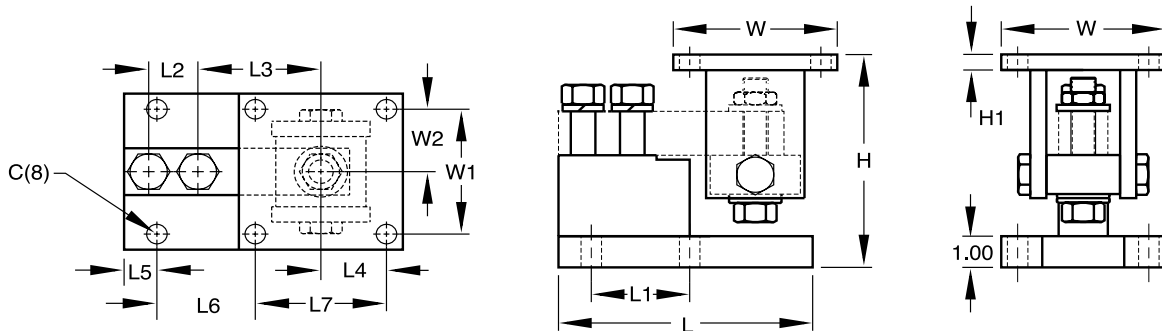
- Capacities (per module): 250-10,000lb (113.4-4535.9kg)
- NTEP Certified cells in 1000-10,000lb (453.6-4535.9kg) capacities
- Zinc plated mild steel/stainless steel construction
- Center-pivoted, tension loading design
- Self-checking, multi-directional movement
- Load is suspended on high-strength bolt instead of wire rope
- Design incorporates spherical washers for self centering

### Complete Kit Includes:

- 1 JB4SS NEMA 4X stainless steel signal-trim junction box
- 3 or 4 RL1800 mild or stainless steel compression mounts
- 3 or 4 RL350023 shear beam load cells
- Stainless steel kits include RL35023S NTEP Certified load cell
- 25ft of Hostile Environment EL147HE SURVIVOR® load cell cable

## SPECIFICATIONS

DIMENSIONS															
RATED CAPACITY	C	MIN/MAX H	H1	L	L1	L2	L3	L4	L5	L6	L7	W	W1	W2	
<b>Mild Steel Construction</b>															
<b>lb/inches</b>															
250-5000 SE	.62	5.25/5.56	.50	6.00	2.00	1.00	3.00	2.00	.68	1.94	4.00	5.00	4.00	2.00	
5000 LE-10,000	.62	6.12/6.62	.50	7.75	3.00	1.50	3.75	2.00	1.03	2.97	4.00	5.00	4.00	2.00	
<b>kg/mm</b>															
113.4-2268.0	15.8	133.4/141.2	12.7	152.4	50.8	25.4	76.2	50.8	17.3	49.3	101.6	127.0	101.6	50.8	
2268.0-4535.9	15.8	155.4/168.1	12.7	196.9	76.2	38.1	95.3	50.8	26.2	75.4	101.6	127.0	101.6	50.8	
<b>Stainless Steel Construction</b>															
<b>lb/inches</b>															
1000-4000	.62	5.25/5.56	.50	6.00	2.00	1.00	3.00	2.00	.68	1.94	4.00	5.00	4.00	2.00	
5000-10,000	.62	6.12/6.62	.50	7.75	3.00	1.50	3.75	2.00	1.03	2.97	4.00	5.00	4.00	2.00	
<b>kg/mm</b>															
453.6-1814.4	15.8	133.4/141.2	12.7	152.4	50.8	25.4	76.2	50.8	17.3	49.3	101.6	127.0	101.6	50.8	
2268.0-4535.9	15.8	155.4/168.1	12.7	196.9	76.2	38.1	95.3	50.8	26.2	75.4	101.6	127.0	101.6	50.8	



**LOAD RATING  
(LOAD CELL CAPACITY)**

**PART #**

**Mild Steel**

**Single Module (DOES NOT Include Load Cell)**

250-5000lb SE (113.4-2268.0kg) .....	17817 .....
5000 LE-10,000lb (2268.0-4535.9kg).....	17819 .....

**3-Module Kit**

250lb (113.4kg)* .....	18075 .....
500lb (226.8kg)* .....	18076 .....
1000lb (453.6kg) .....	18077 .....
2000lb (907.2kg) .....	18078 .....
2500lb (1134.0kg) .....	18079 .....
3000lb (1360.8kg) .....	18080 .....
4000lb (1814.4kg) .....	18081 .....
5000lb SE (2268.0kg) .....	18082 .....
5000lb LE (2268.0kg) .....	18083 .....
10,000lb (4535.9kg) .....	18084 .....

**4-Module Kit**

250lb (113.4kg) .....	18085 .....
500lb (226.8kg) .....	18086 .....
1000lb (453.6kg) .....	18087 .....
2000lb (907.2kg) .....	18088 .....
2500lb (1134.0kg) .....	18089 .....
3000lb (1360.8kg) .....	18090 .....
4000lb (1814.4kg) .....	18091 .....
5000lb SE (2268.0kg) .....	18092 .....
5000lb LE (2268.0kg) .....	18093 .....
10,000lb (4535.9kg) .....	18094 .....

**Stainless Steel**

**Single Module (DOES NOT Include Load Cell)**

250-4000lb (113.4-1814.4kg).....	17818 .....
5000-10,000lb (2268.0-4535.9kg).....	17820 .....

**3-Module Kit**

1000lb (453.6kg) .....	18095 .....
2000lb (907.2kg) .....	18096 .....
2500lb (1134.0kg) .....	18097 .....
4000lb (1814.4kg) .....	18099 .....
5000lb (2268.0kg) .....	18100 .....
10,000lb (4535.9kg) .....	18101 .....

**4-Module Kit**

1000lb (453.6kg) .....	18102 .....
2000lb (907.2kg) .....	18103 .....
2500lb (1134.0kg) .....	18104 .....
4000lb (1814.4kg) .....	18106 .....
5000lb (2268.0kg) .....	18107 .....
10,000lb (4535.9kg) .....	18108 .....

\* Use RL30000 load cells SE refers to small envelope LE refers to large envelope

**C&M Scale**  
**7241 W. Roosevelt Rd**  
**Forest Park IL 60130**  
**Sales, Service & Rentals**

**Toll Free: (800) 243-3721**  
**Phone: (708) 771-0100**  
**Fax: (708) 771-0196**  
**www.cmscale.com**