



Available in configuration with three or four mounting assemblies.

## LOAD CELL CERTIFICATIONS



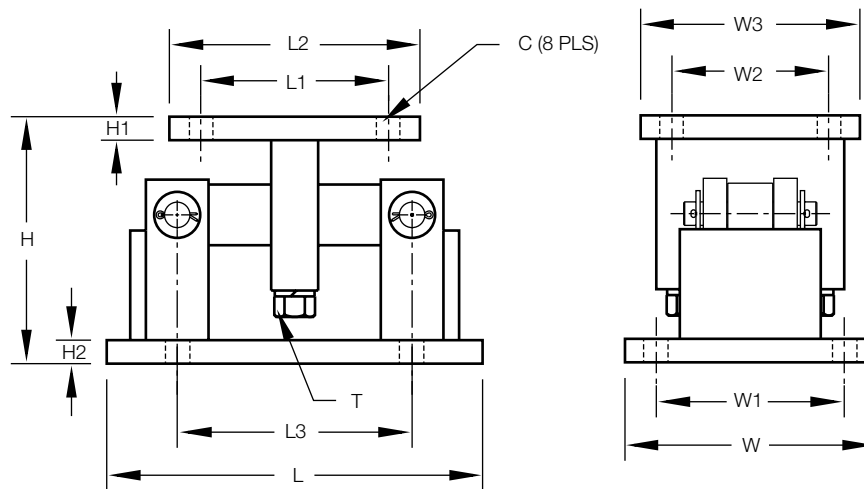
## STANDARD FEATURES

- Capacities (per module): 1000-75,000lb (453.6-34,019.5kg)
- 304 stainless steel construction
- Self-checking, easy-to-use design allows module to be bolted directly to tank leg without requiring additional mounting plates or load buttons
- Environmentally protected load cells
- Double-ended shear beam design, center loaded

### Complete Kit Includes:

- 1 JB4SS NEMA 4X stainless steel signal-trim junction box
- 3 or 4 RL1600 stainless steel compression mounts
- 3 or 4 RL75016SS stainless steel double-ended shear beam load cells
- 25ft of our Hostile Environment EL147HE SURVIVOR® load cell cable

## SPECIFICATIONS



DIMENSIONS													
RATED CAPACITY	C	H	H1	H2	L	L1	L2	L3	T	W	W1	W2	W3
lb/inches													
1000-5000	.56	5.00	.50	.50	9.25	2.75	4.00	6.25	1/2-13 UNC	5.00	3.75	2.75	4.00
10,000-25,000	.78	7.87	.75	.75	12.00	6.00	8.00	7.50	3/4-10 UNC	8.00	6.00	6.00	8.00
50,000-75,000	.78	9.31	1.00	1.00	16.25	6.50	9.00	11.50	1 1/4-7 UNC	12.00	9.50	6.50	9.00
kg/mm													
453.6-2268.0	14.2	127.0	12.7	12.7	235.0	69.9	101.6	158.8	1/2-13 UNC	127.0	95.3	69.9	101.6
4535.9-11,339.8	19.8	199.9	19.1	19.1	304.8	152.4	203.2	190.5	3/4-10 UNC	203.2	152.4	152.4	203.2
22,679.7-34,019.5	19.8	236.5	25.4	25.4	412.8	165.1	228.6	292.1	1 1/4-7 UNC	304.8	241.3	165.1	228.6

**LOAD RATING (PER MODULE)****PART #****Single Module (DOES NOT Include Load Cell)**

1000-5000lb (453.6-2268.0kg).....	17813 .....
10,000-25,000lb (4535.9-11,339.8kg).....	17815 .....
50,000lb (22,679.6kg) .....	17842 .....
75,000lb (34,019.5kg) .....	25347 .....

**3-Module Kit**

1000lb (453.6kg) .....	18141 .....
1500lb (680.4kg) .....	18142 .....
2000lb (907.2kg) .....	18143 .....
2500lb (1134.0kg) .....	18144 .....
5000lb (2268.0kg) .....	18145 .....
10,000lb (4535.9kg) .....	18146 .....
15,000lb (6803.9kg) .....	18147 .....
20,000lb (9071.9kg) .....	18148 .....
25,000lb (11,339.8kg) .....	18149 .....
50,000lb (22,679.6kg) .....	18150 .....
75,000lb (34,019.5kg) .....	25352 .....

**4-Module Kit**

1000lb (453.6kg) .....	18152 .....
1500lb (680.4kg) .....	18153 .....
2000lb (907.2kg) .....	18154 .....
2500lb (1134.0kg) .....	18155 .....
5000lb (2268.0kg) .....	18156 .....
10,000lb (4535.9kg) .....	18157 .....
15,000lb (6803.9kg) .....	18158 .....
20,000lb (9071.9kg) .....	18159 .....
25,000lb (11,339.8kg) .....	18160 .....
50,000lb (22,679.6kg) .....	18161 .....
75,000lb (34,019.5kg) .....	25353 .....
Equalizer pad, 1000lb – 5000lb .....	67152 .....
Equalizer pad, 10,000lb – 25,000lb .....	67153 .....

**Dummy Load Cells (Mild steel)**

1000lb – 5000lb (453.6kg – 2268.0kg) .....	18236 .....
10,000lb – 25,000lb (4535.9kg – 11,339.8kg) .....	18237 .....
50,000lb – 75,000lb (22,679.6kg – 34,019.5kg) .....	18238 .....

**C&M Scale**  
 - 7241 W. Roosevelt Rd  
 Forest Park IL 60130  
**Sales, Service & Rentals**

**Toll Free: (800) 243-3721**  
**Phone: (708) 771-0100**  
**Fax: (708) 771-0196**  
**www.cmscale.com**