

# RL1600 Series

Cast Iron



Available in configuration with three or four mounting assemblies.

## LOAD CELL CERTIFICATIONS



## STANDARD FEATURES

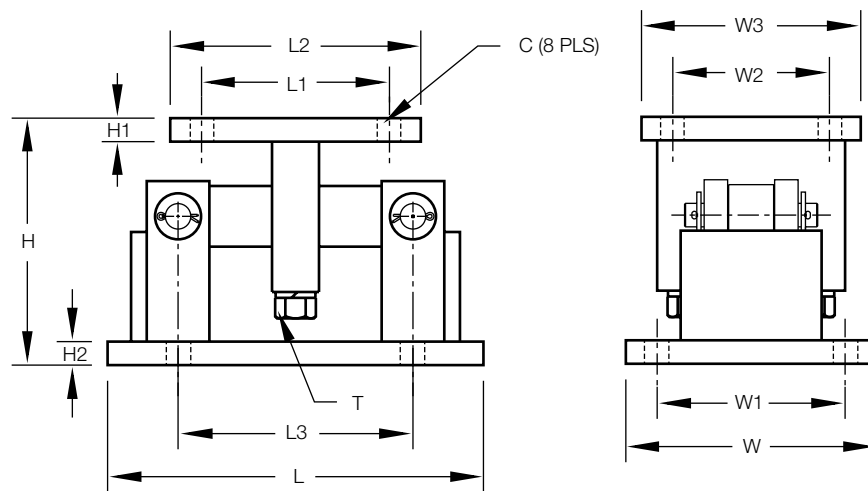
- Capacities (per module): 1000-25,000lb (453.6-11,339.8kg)
- Cast iron construction
- Self-checking, easy-to-use design allows module to be bolted directly to tank leg without requiring additional mounting plates or load buttons
- Environmentally protected load cells
- Double-ended beam design, center loaded

### Complete Kit Includes:

- 1 JB4SS NEMA 4X stainless steel signal-trim junction box
- 3 or 4 RL1600 cast iron compression mounts
- 3 or 4 RL75016 double-ended shear beam load cells
- 25ft of Hostile Environment EL147HE SURVIVOR® load cell cable

## SPECIFICATIONS

DIMENSIONS													
RATED CAPACITY lb/inches	C	H	H1	H2	L	L1	L2	L3	T	W	W1	W2	W3
1000-5000	.56	5.00	.50	.50	9.31	2.75	4.00	6.25	1/2-13 UNC	5.00	3.75	2.75	4.00
10,000-25,000	.78	7.89	.75	.75	12.00	6.00	8.00	7.50	3/4-10 UNC	8.00	6.00	6.00	8.00
kg/mm													
453.6-2268.0	14.2	127.0	12.7	12.7	236.5	69.9	101.6	158.8	1/2-13 UNC	127.0	95.3	69.9	101.6
4535.9-11,339.8	19.8	200.4	19.1	19.1	304.8	152.4	203.2	190.5	3/4-10 UNC	203.2	152.4	152.4	203.2



**LOAD RATING  
(PER MODULE)**

**PART #**

**Single Module (DOES NOT Include Load Cell)**

1000-5000lb (453.6-2268.0kg).....	17964.....
10,000-25,000lb (4535.9-11,339.8kg).....	17965.....

**3-Module Kit**

1000lb (453.6kg) .....	25663.....
1500lb (680.4kg) .....	25664.....
2000lb (907.2kg) .....	25665.....
2500lb (1134.0kg) .....	25666.....
3000lb (1360.8kg) .....	25667.....
5000lb (2268.0kg) .....	25668.....
10,000lb (4535.9kg) .....	25669.....
15,000lb (6803.9kg) .....	25671.....
20,000lb (9071.9kg) .....	25672.....
25,000lb (11,339.8kg) .....	25674.....

**4-Module Kit**

1000lb (453.6kg) .....	25675.....
1500lb (680.4kg) .....	25676.....
2000lb (907.2kg) .....	25677.....
2500lb (1134.0kg) .....	25678.....
3000lb (1360.8kg) .....	25679.....
5000lb (2268.0kg) .....	25680.....
10,000lb (4535.9kg) .....	25681.....
15,000lb (6803.9kg) .....	25682.....
20,000lb (9071.9kg) .....	25683.....
25,000lb (11,339.8kg) .....	25684.....
Equalizer pad, 1000lb – 5000lb .....	67152.....
Equalizer pad, 10,000lb – 25,000lb .....	67153.....

**Dummy Load Cells**

1000lb – 5000lb (453.6kg – 2268.0kg) .....	18236.....
10,000lb – 25,000lb (4535.9kg – 11,339.8kg) .....	18237.....

**C&M Scale**  
7241 W. Roosevelt Rd  
Forest Park IL 60130  
**Sales, Service & Rentals**

**Toll Free: (800) 243-3721**  
**Phone: (708) 771-0100**  
**Fax: (708) 771-0196**  
**www.cmscale.com**