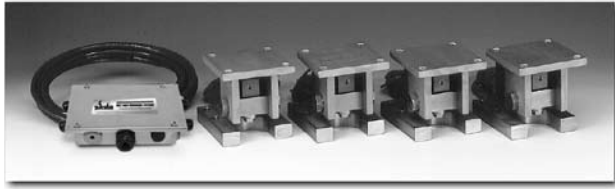


SURVIVOR® 1855HE Weigh Modules



LOAD CELL CERTIFICATIONS



STANDARD FEATURES

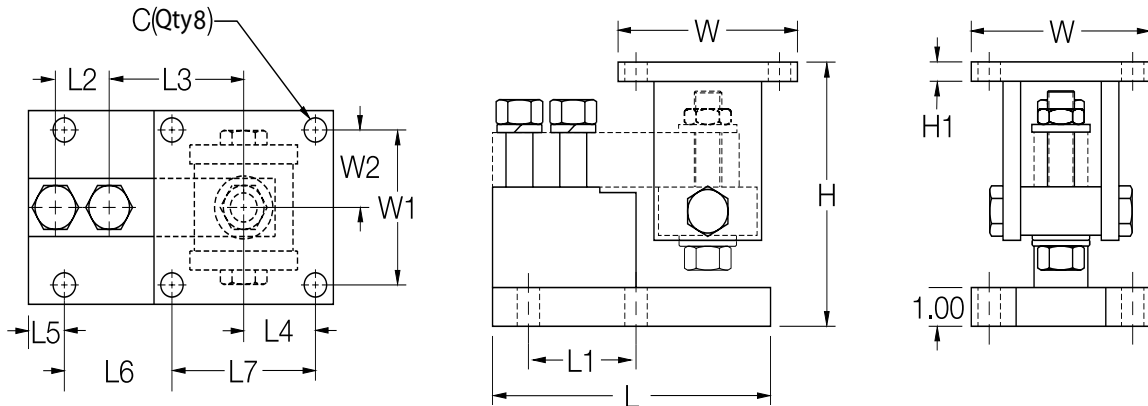
- All stainless steel construction
- Welded seal, stainless steel load cells, IP67, guaranteed waterproof
- NTEP Certified load cells, 5000d, Class III Multiple Cell
- Bolt-in-place design; module bolts directly to tank leg without requiring additional load buttons or mounting plates
- Self-checking design with lift-off/tip-over protection
- 2-year limited warranty

Complete Kit Includes:

- 1 JB4SS NEMA 4X stainless steel signal-trim junction box
- 3 or 4 1855HE stainless steel compression mounts
- 3 or 4 RL35082 stainless steel, welded seal single-ended beam load cells
- 25ft of Hostile Environment EL147HE SURVIVOR® load cell cable

SPECIFICATIONS

DIMENSIONS															
RATED CAPACITY	C	MIN/MAX H	H1	L	L1	L2	L3	L4	L5	L6	L7	W	W1	W2	
lb/inches															
1000-4000	.62	5.25/5.56	.50	6.00	2.00	1.00	3.00	2.00	.68	1.94	4.00	5.00	4.00	2.00	
5000-10,000	.62	6.12/6.62	.50	7.75	3.00	1.50	3.75	2.00	1.03	2.97	4.00	5.00	4.00	2.00	
kg/mm															
453.6-1814.4	15.8	133.4/141.2	12.7	152.4	50.8	25.4	76.2	50.8	17.3	49.3	101.6	127.0	101.6	50.8	
2268.0-4535.9	15.8	155.4/168.1	12.7	196.9	76.2	38.1	95.3	50.8	26.2	75.4	101.6	127.0	101.6	50.8	



**LOAD RATING
(PER MODULE)**

PART #

Single Module (Includes Load Cell)

1000lb (453.6kg)	32975
2500lb (1134.0kg)	32976
4000lb (1814.4kg)	32977
5000lb (2268.0kg)	32978
10,000lb (4535.9kg)	32979

3-Module Kit

1000lb (453.6kg)	30390
2500lb (1134.0kg)	30388
4000lb (1814.4kg)	30386
5000lb (2268.0kg)	30384
10,000lb (4535.9kg)	30382

4-Module Kit

1000lb (453.6kg)	30389
2500lb (1134.0kg)	30387
4000lb (1814.4kg)	30385
5000lb (2268.0kg)	30383
10,000lb (4535.9kg)	30381