

# SURVIVOR® 1700HE Weigh Modules



## LOAD CELL CERTIFICATIONS



IP66/68



## STANDARD FEATURES

- All stainless steel construction
- Hermetically-sealed, stainless steel load cells, IP66/68, guaranteed waterproof
- OIML- certified load cells from 44 - 11,000lb (20-24,255kg)
- Bolt-in-place design; module bolts directly to tank leg without requiring additional load buttons or mounting plates
- 2-year limited warranty

### Complete Kit Includes:

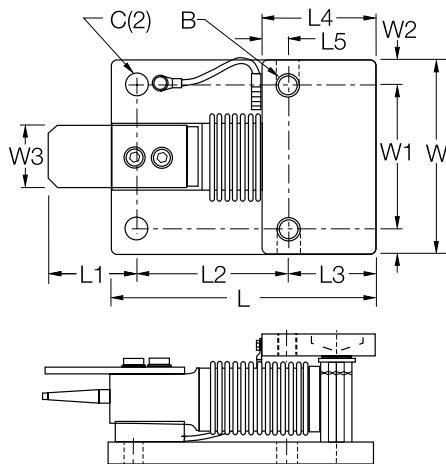
- 1 JB4SS NEMA 4X stainless steel signal-trim junction box
- 3 or 4 1700HE stainless steel compression mounts
- 3 or 4 RLHBB (5-250kg) or RLHTO (500-5000kg) stainless steel, Hermetically-sealed single-ended beam load cells
- 25ft of Hostile Environment EL147HE SURVIVOR® load cell cable

## SPECIFICATIONS

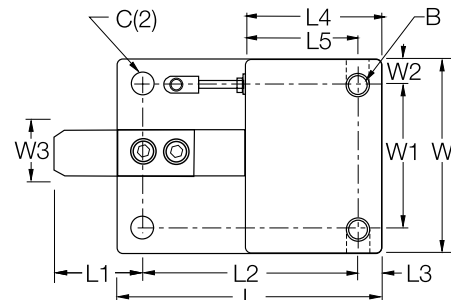
DIMENSIONS														
RATED CAPACITY	C	B	*H1	**H2	L	L1	L2	L3	L4	L5	W	W1	W2	W3
kg/mm														
5-250	10.3	1/2-20NF	80.0	86.1	132.1	64.0	76.0	42.0	56.0	14.0	96.0	70.0	13.0	25.0
500-2000	20.0	3/4-10NC	99.8	108.0	165.0	70.0	130.0	15.0	80.0	64.5	110.0	70.0	20.0	30.0
5000	20.0	3/4-10NC	135.0	143.0	215.0	81.0	161.0	20.0	90.0	70.5	150.0	90.0	30.0	40.0
lb/inches														
11-550	.40	1/2-20NF	3.15	3.39	5.20	2.52	2.99	1.65	2.20	.55	3.78	2.76	.51	.98
1100-4400	.78	3/4-10NC	3.93	4.25	6.50	2.76	5.12	.59	3.15	2.54	4.33	2.76	.79	1.18
11,000	.78	3/4-10NC	5.31	5.63	8.46	3.19	6.34	.79	3.56	2.78	5.91	3.54	1.18	1.57

\* In weighing position

\*\* In jacked-up position for load cell shipping or removal



5 kg-50 kg capacities



500 kg-5000 kg capacities

**LOAD RATING  
(PER MODULE)**

**PART #**

**OIML C3-Certified Load Cells Included**

5kg (11.0lb) .....	32687 .....
10kg (22.0lb) .....	32688 .....
20kg (44.1 lb) .....	32689 .....
50kg (110.2lb) .....	32690 .....
100kg (220.5lb) .....	32691 .....
200kg (440.9lb) .....	32692 .....
250kg (551.2lb) .....	32693 .....
500kg (1102.3lb) .....	32974 .....
1000kg (2204.6lb) .....	32973 .....
2000kg (4,409.2lb) .....	32972 .....
5000kg (11,023.1 lb) .....	32971 .....

**3-Module Kit, OIML C3-Certified Load Cells**

5kg (11.0lb) .....	32920 .....
10kg (22.0lb) .....	32921 .....
20kg (44.1 lb) .....	32922 .....
50kg (110.2lb) .....	32923 .....
100kg (220.5lb) .....	32924 .....
200kg (440.9lb) .....	32925 .....
250kg (551.2lb) .....	32926 .....
500kg (1102.3lb) .....	32980 .....
1000kg (2204.6lb) .....	32981 .....
2000kg (4,409.2lb) .....	32982 .....
5000kg (11,023.1 lb) .....	32983 .....

**4-Module Kit, OIML C3-Certified Load Cells**

5kg (11.0lb) .....	32927 .....
10kg (22.0lb) .....	32928 .....
20kg (44.1 lb) .....	32929 .....
50kg (110.2lb) .....	32930 .....
100kg (220.5lb) .....	32931 .....
200kg (440.9lb) .....	32932 .....
250kg (551.2lb) .....	32933 .....
500kg (1102.3lb) .....	32984 .....
1000kg (2204.6lb) .....	32985 .....

**C&M Scale**  
**7241 W. Roosevelt Rd**  
**Forest Park IL 60130**  
**Sales, Service & Rentals**

**Toll Free: (800) 243-3721**  
**Phone: (708) 771-0100**  
**Fax: (708) 771-0196**  
**www.cmscale.com**