

Waterproof

RL1600 HE



Available in configuration with three or four mounting assemblies.

LOAD CELL CERTIFICATIONS



STANDARD FEATURES

- Capacities (per module): 1000-25,000lb (453.6-11,339.8kg)
- 304 stainless steel construction
- Self-checking easy-to-use design allows module to be bolted directly to tank leg without requiring additional mounting plates or load buttons
- Hermetically-sealed IP66/68 protected load cells
- Double-ended shear beam design, center loaded

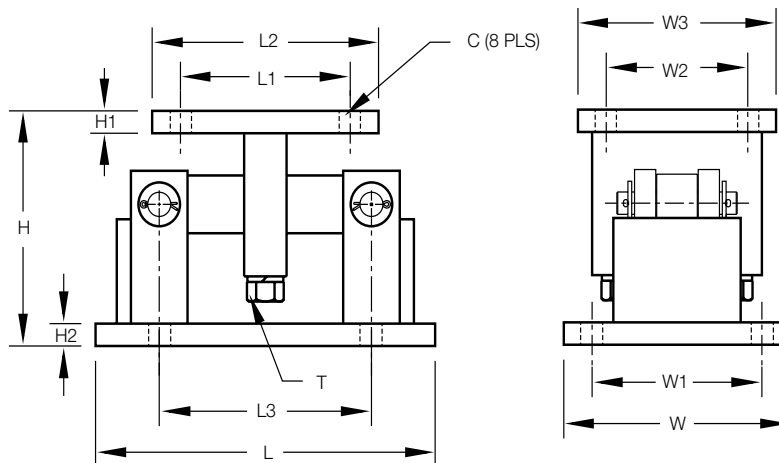
Complete Kit Includes:

- 1 JB4SS NEMA 4X stainless steel signal-trim junction box
- 3 or 4 RL1600 stainless steel compression mounts
- 3 or 4 RL75016 WHE stainless steel, hermetically-sealed double-ended shear beam load cells
- 25ft of Hostile Environment EL147HE SURVIVOR® load cell cable

SPECIFICATIONS

DIMENSIONS

RATED CAPACITY lb/inches	C	H	H1	H2	L	L1	L2	L3	T	W	W1	W2	W3
1000-5000	.56	5.00	.50	.50	9.25	2.75	4.00	6.25	1/2-13 UNC	5.00	3.75	2.75	4.00
10,000-25,000	.78	7.87	.75	.75	12.00	6.00	8.00	7.50	3/4-10 UNC	8.00	6.00	6.00	8.00
kg/mm													
453.6-2268.0	14.2	127.0	12.7	12.7	235.0	69.9	101.6	158.8	1/2-13 UNC	127.0	95.3	69.9	101.6
4535.9-11,339.8	19.8	199.9	19.1	19.1	304.8	152.4	203.2	190.5	3/4-10 UNC	203.2	152.4	152.4	203.2



**LOAD RATING
(PER MODULE)**

PART #

3-Module Kit

1000lb (453.6kg)	46723
2500lb (1134.0kg)	46724
5000lb (2268.0kg)	46725
10,000lb (4535.9kg)	46726
15,000lb (6803.9kg)	46727
20,000lb (9072.0kg)	84664
25,000lb (11,339.8kg)	46728

4-Module Kit

1000lb (453.6kg)	46729
2500lb (1134.0kg)	46730
5000lb (2268.0kg)	46731
10,000lb (4535.9kg)	46732
15,000lb (6803.9kg)	46733
20,000lb (9072.0kg)	84665
25,000lb (11,339.8kg)	46734
Equalizer pad, 1000lb – 5000lb	67152
Equalizer pad, 10,000lb – 25,000lb	67153

Dummy Load Cells

1000lb – 5000lb (453.6kg – 2268.0kg).....	18236
10,000lb – 25,000lb (4535.9kg – 11,339.8kg).....	18237